

Department of Zoology

Certificate Course

Course name: COMMON DISEASES AND HEALTH CARE

Course Code: LFCC22ZL1

Type: Programme for I & II B.Sc. Zoology

Objectives:

- Enables students to get acquainted with different types of diseases
- To develop skill in prevention of diseases by knowing the modes of infection
- To inculcate the importance of health and nutrition

Course duration: 30hrs

COMMON DISEASES AND HEALTH CARE

SYLLABUS

Duration (30 hrs)

1. Module I – Concept of Health (4 hrs)
 - Dimensions of Health
 - Health Education
 - Objectives of Health Education
 - Key Factors That Determine Health
2. Module II – Spread and Prevention of Infection (16 hrs)
 - Common Diseases – (10 hrs)
 - Viral
 - Bacterial
 - Protozoan
 - Fungi
 - Worms/ Helminthes

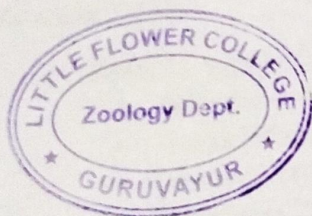


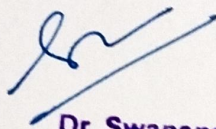
- Mode/Spread of infection – from living sources, nonliving sources, parasites and vectors (4 hrs)
- Prevention of infections (2 hrs)
- 3. Module III – Nutrition (6 hrs)
 - Nutrients
 - Balanced Diet
 - Nutritional Disorders
- 4. Module IV – Demography and Family Planning (4 hrs)

Internal examination: 1 External examination: 1

REFERENCES BOOKS

1. Human Anatomy, Physiology and Health Education by Jayaveera K N. and Vrushabendra Swamy B. M. published by S. Chand & Company Ltd. New Delhi.
2. Textbook of Medical Physiology by Guyton published by Elsevier Saunders
3. Ganong's Review of Medical Physiology by Barret *et al.*, published by Mc Graw Hill LANGE
4. Leaflets of Kerala State Disaster Management Authority




Dr. Swapana Johny
Assistant Professor & Head
Department of Zoology
Little Flower College
Guruvayoor